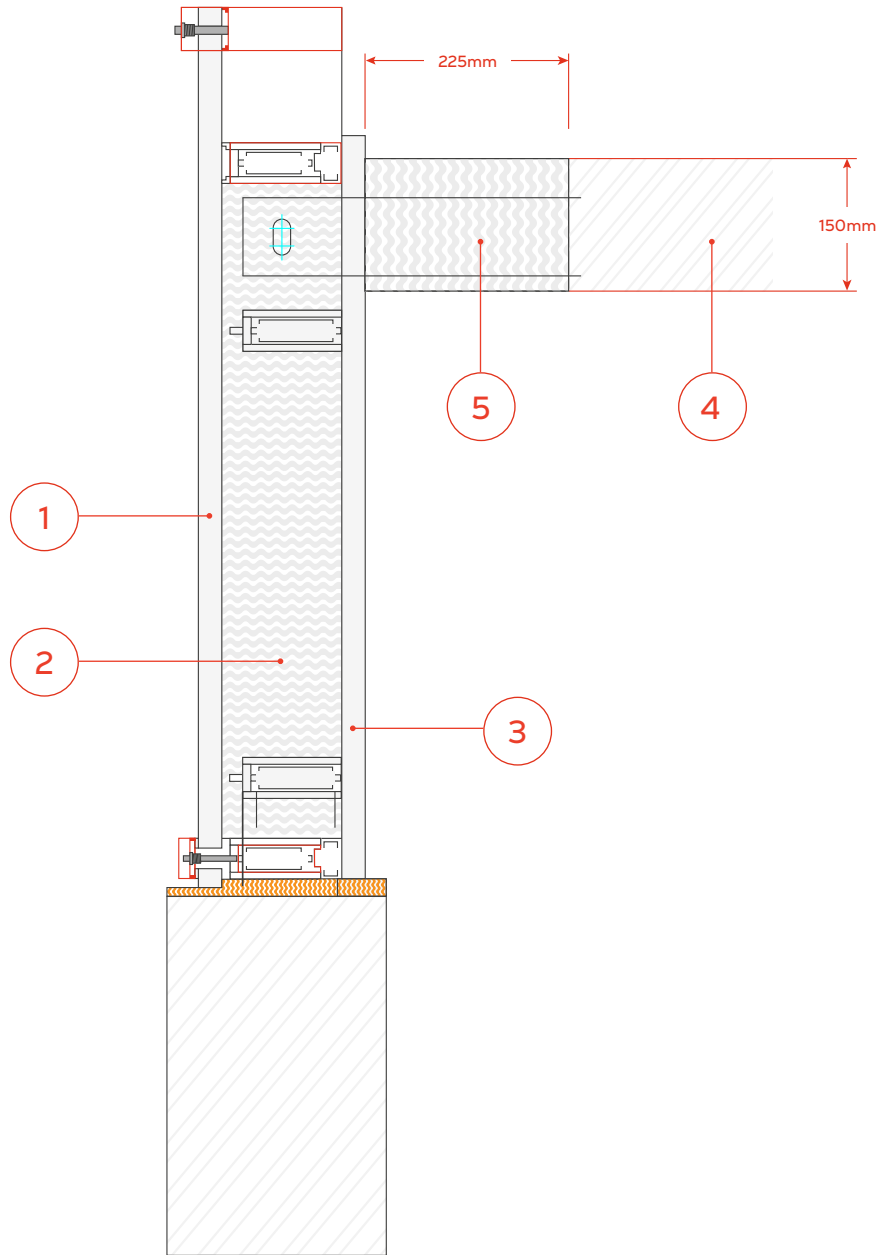


PFC COROFIL FASTIGHT CURTAIN WALL BARRIER  
 INSTALLED HORIZONTALLY WITH CURTAIN WALLING SYSTEM  
 [100mm DEEP STRIP UP TO 225mm GAP WIDTH]



- 1 Outer Panel (2mm Aluminum Sheet / 20mm Calcium Silicate Board / 2mm Aluminum Sheet)
- 2 Stonewool core
- 3 25mm Calcium Silicate Board
- 4 Minimum 150mm thick rigid floor
- 5 PFC Corofil Fastight Curtain Wall Barrier CFCW

PFC Corofil Fastight Curtain Wall Barrier CFCW to be installed in line with the product installation instructions. See Technical Data Sheet TDSCFCW for full details.

Units 3 & 4, King George Trading Estate, Davis Road, Chessington, Surrey KT9 1TT	
Phone: 020 8391 0533 Web: www.pfc-corofil.com Email: tech@pfc-corofil.com	
Drawing Title: Fastight Horizontal Curtain Walling	Date: 03/09/2024
Drawing Number: CFCW-H-225	Checked by: SE/DQ
Scale: Not to scale	Revision: 1