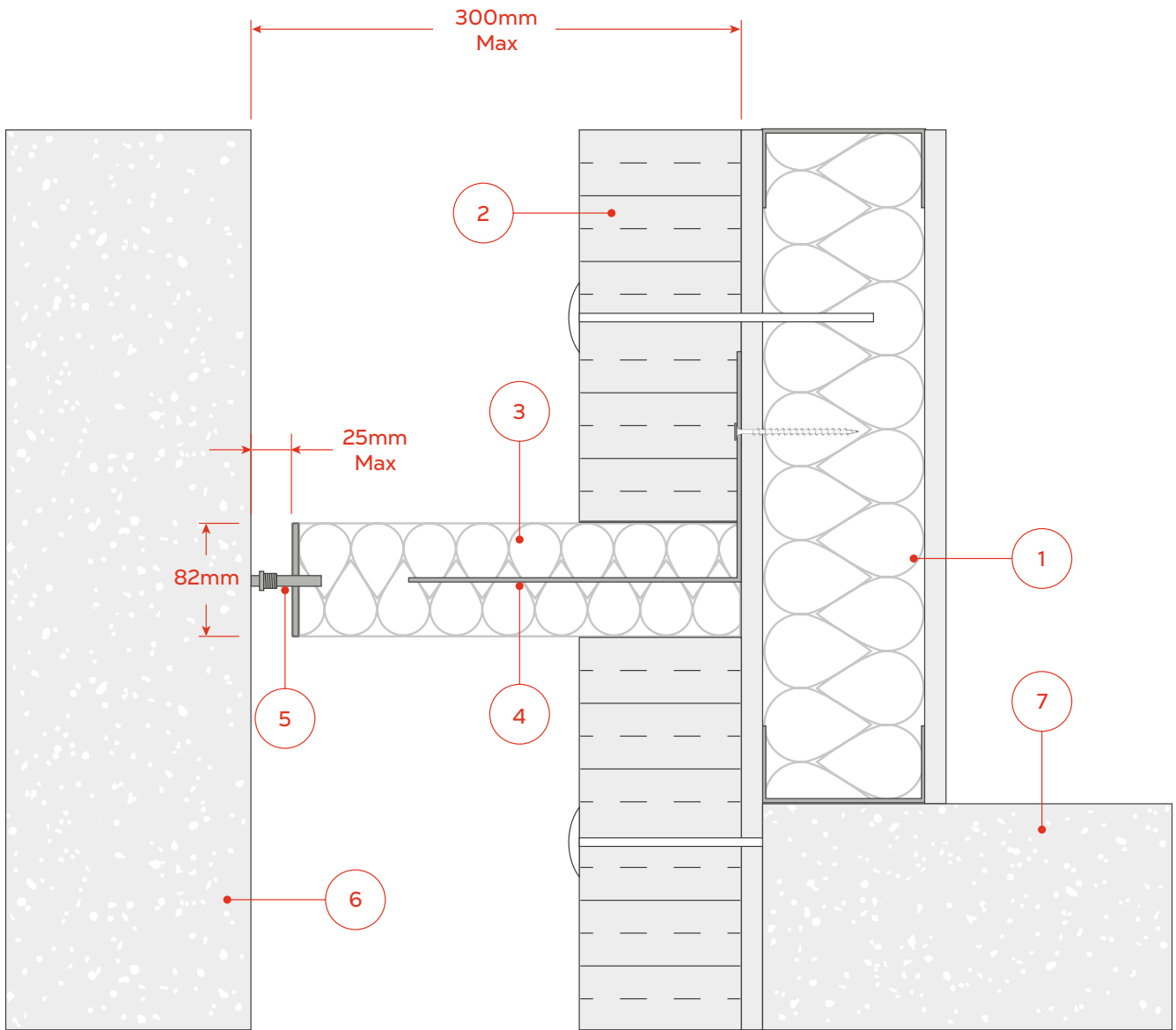


PFC COROFIL OPEN STATE BARRIER COSB 25 (1024)
INSTALLED WITH SFS SYSTEM



PFC Corofil Open State Barrier COSB 25 (1024) to be installed in line with the product installation instructions See Technical Data Sheet TDSCOSB 25 for full details.

- | | | | |
|---|--|---|----------------------------|
| 1 | SFS system clad externally with Siniat Weather Defence Board | 5 | PFC Corofil Pigtail Screw |
| 2 | Cavity Insulation | 6 | Masonry external substrate |
| 3 | PFC Corofil Open State Barrier COSB 25 (1024) | 7 | Concrete slab |
| 4 | PFC Corofil Multipurpose Bracket | | |