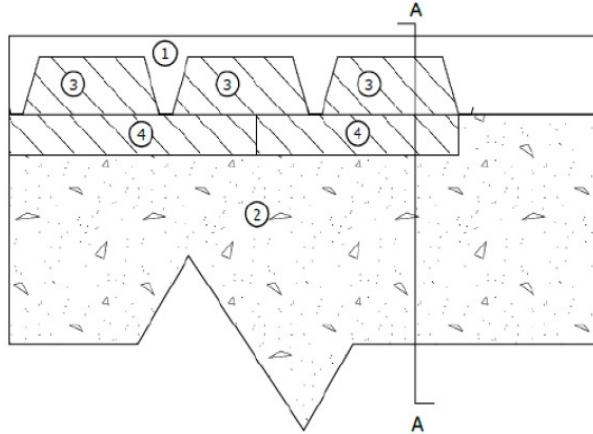


PFC Corofil Installation Details

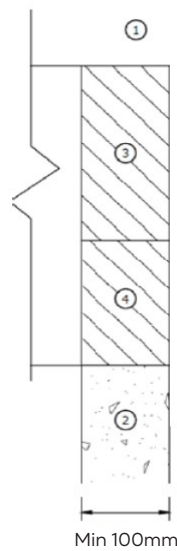
PFC COROFIL LINEAR GAP BLOCK CLGB INSTALLED WITHIN TRAPEZOIDAL PROFILE OF COMPOSITE DECK [100mm DEEP BLOCK 10mm - 210mm HIGH DECK PROFILE] WITH PFC COROFIL LINEAR GAP STRIP CLGS INSTALLED AT HEAD OF RIGID WALL [100mm DEEP STRIP 10mm - 150mm GAP WIDTH]



Front view:



Section view (A-A):



PFC Corofil Cavity Fire Stop CLGB to be installed in line with the product installation instructions. See Technical Data Sheet TDSCCLGB for full details.

- 1 Composite deck
- 2 Minimum 100mm thick lightweight aggregate wall
- 3 PFC Corofil Linear Gap Block CLGB
- 4 PFC Corofil Linear Gap Strip CLGS

Units 3 & 4, King George Trading Estate, Davis Road, Chessington, Surrey KT9 1TT	
Phone: 020 8391 0533 Web: www.pfc-corofil.com Email: tech@pfc-corofil.com	
Drawing Title: CLGB-CLGS Rigid Wall	Date: 27/02/2023
Drawing Number: CLGB-CLGS-RW-210-150	Checked by: SE/DQ
Scale: Not to scale	Revision: 1