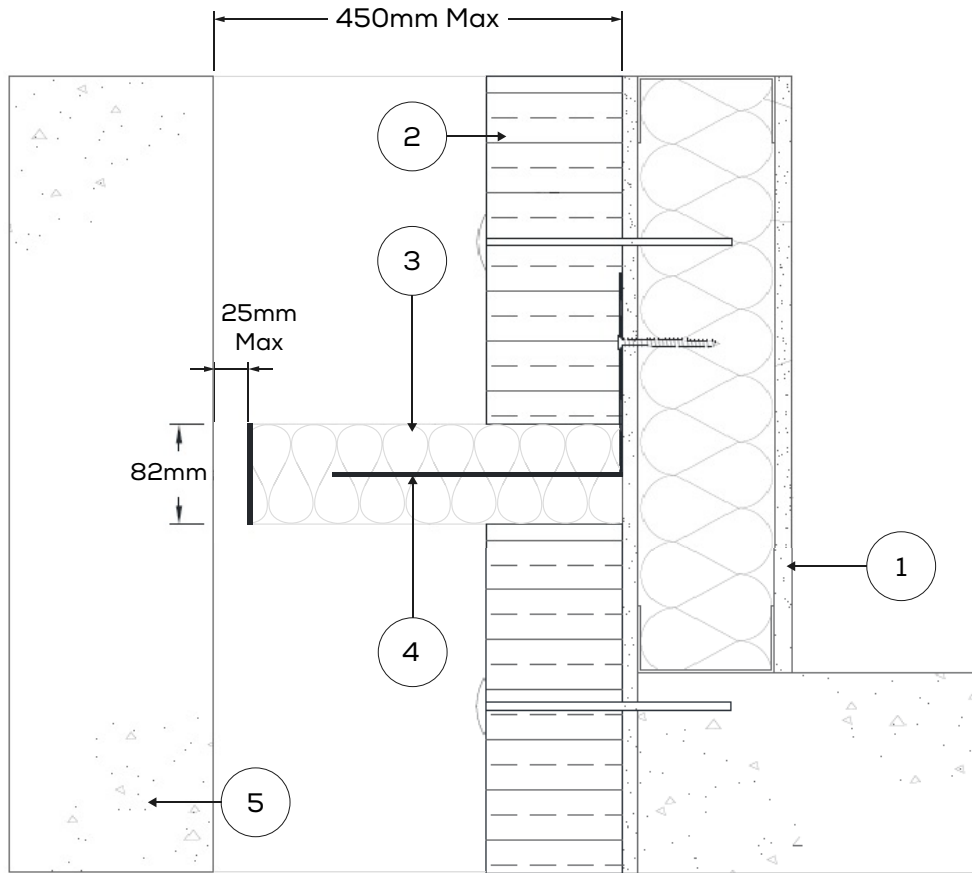


**PFC COROFIL OPEN STATE BARRIER COSB25 (1024)
 INSTALLED WITH SFS INNER SUBSTRATE
 [40mm - 450mm CAVITY WIDTH - 25mm AIR GAP]**



PFC Corofil Open State Barrier COSB 25 (1024) to be installed in line with the product installation instructions. See Technical Data Sheet TDSCOSB 25 for full details.

1 SFS System with Gypsum Board

5 Masonry outer substrate

2 PIR / Phenolic / Stone Wool cavity insulation

3 PFC Corofil Open State Barrier COSB 25 (1024)

4 PFC Corofil Multipurpose (MP) / High Performance (HP) Bracket

Units 3 & 4, King George Trading Estate, Davis Road, Chessington, Surrey KT9 1TT	
Phone: 020 8391 0533 Web: www.pfc-corofil.com Email: tech@pfc-corofil.com	
Drawing Title: COSB25 (1024) SFS	Date: 30/04/2024
Drawing Number: COSB25-1024-SFS-450	Checked by: SE/DQ
Scale: Not to scale	Revision: 1.1